

Mengenal Fitur Canon Remote Operation viewer

Salam sehat semua

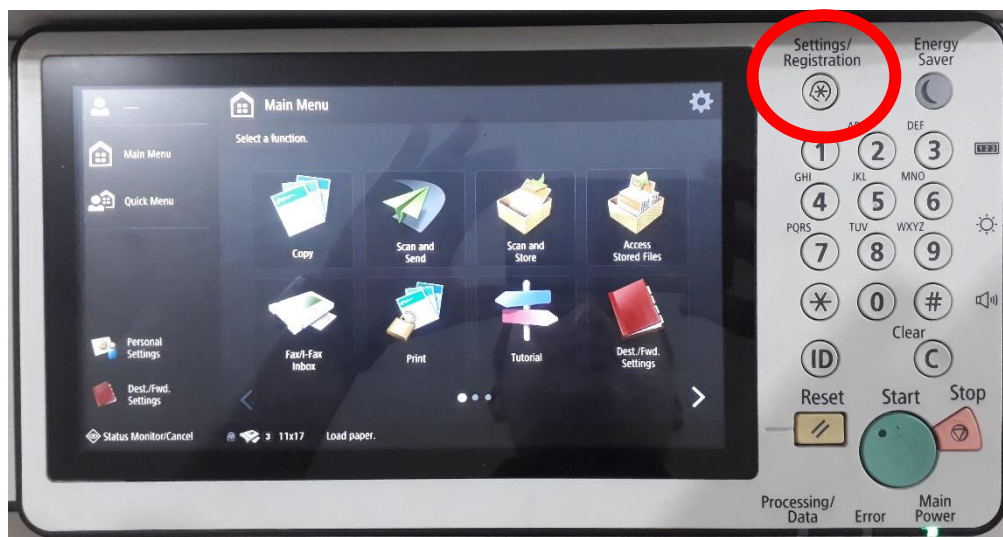
Kali ini kita akan mencoba fitur aplikasi **canon remote operation viewer** iRA Generasi 3 Series ya... Simak penjelasannya yuk..

Alat & bahan

- Komputer/laptop
- Kali ini mimin pakai Mesin Fotocopy Canon iRA 45xx Series ya
- Pastikan kedua perangkat pada 1 (satu) jaringan yang sama

Berikut langkah-langkahnya 😊

1. Langkah Pertama, nyalakan mesin kamu ya. Kemudian tekan tombol **Setting/Registration** pada panel mesin

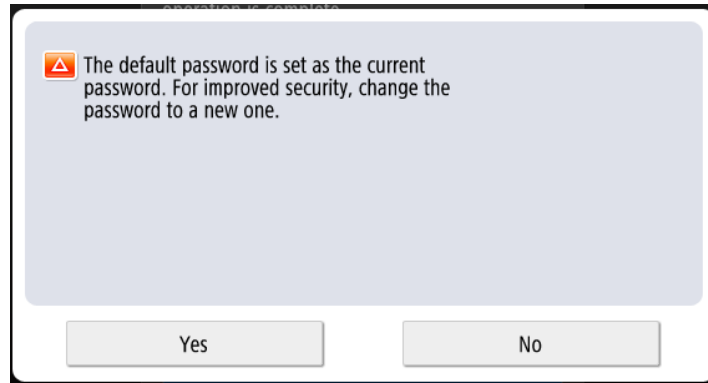


2. Setelah menekan tombol Setting/Registration, akan muncul kotak informasi Login. Untuk Default password login isikan **“7654321”**. Kemudian Tekan Login

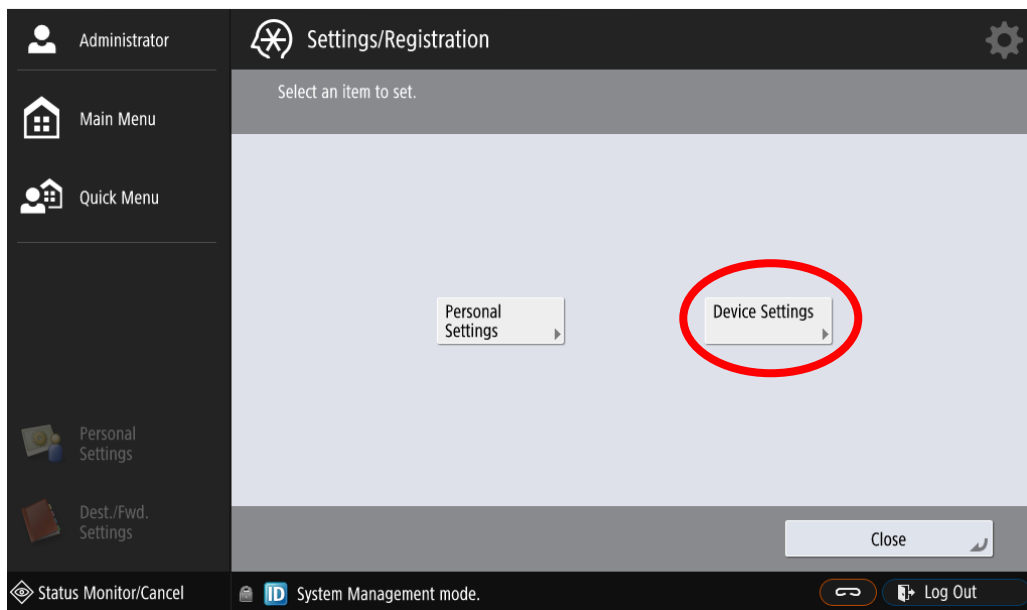
Enter the user name and password, then press [Log In]. Make sure to log out after the operation is complete.

Login Destination

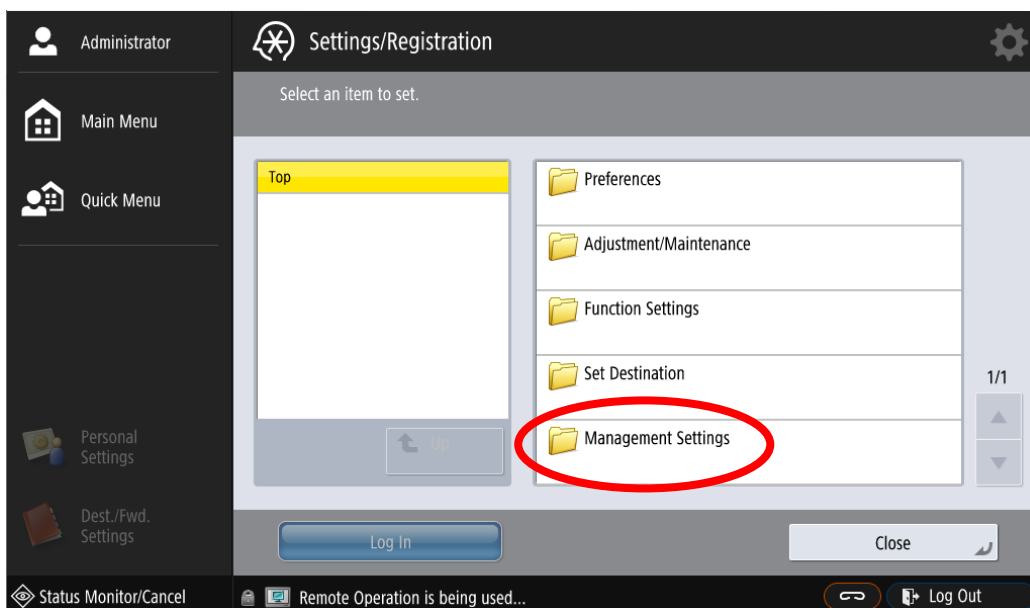
3. Jika muncul pesan seperti di bawah ini, tekan **NO** jika anda tidak ingin merubah password default nya.



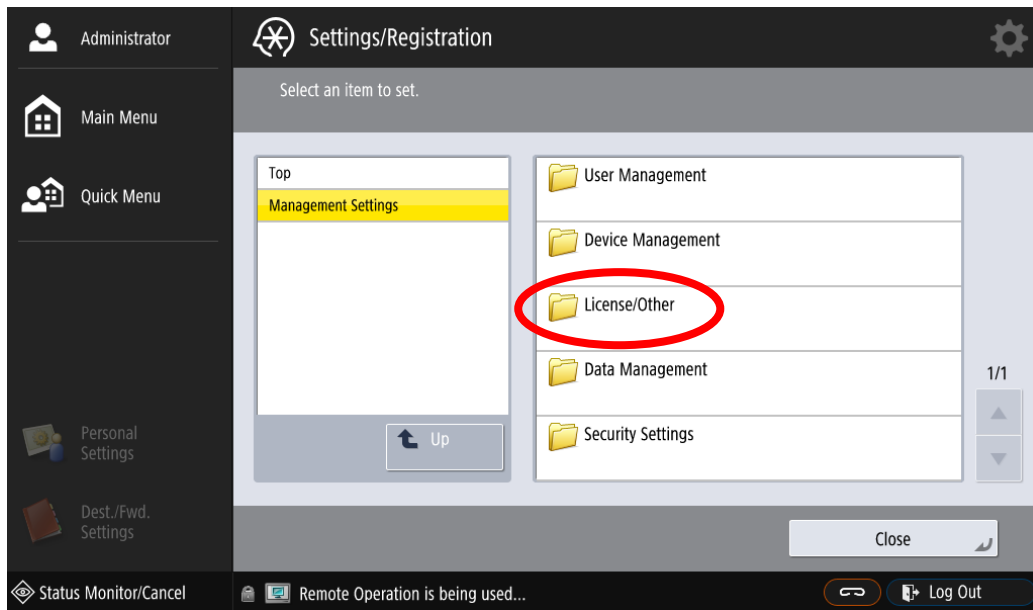
4. Langkah berikutnya pilih **Device Settings**



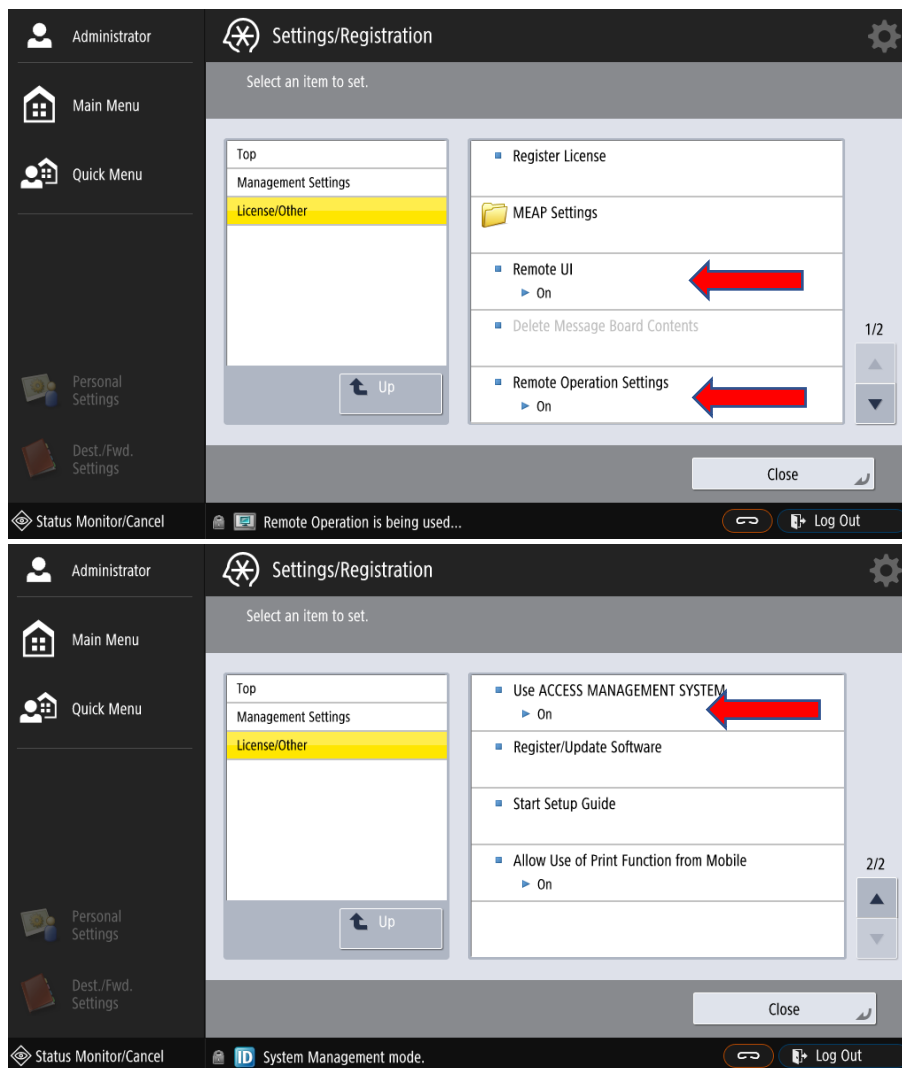
5. Kemudian pilih **Management Settings**



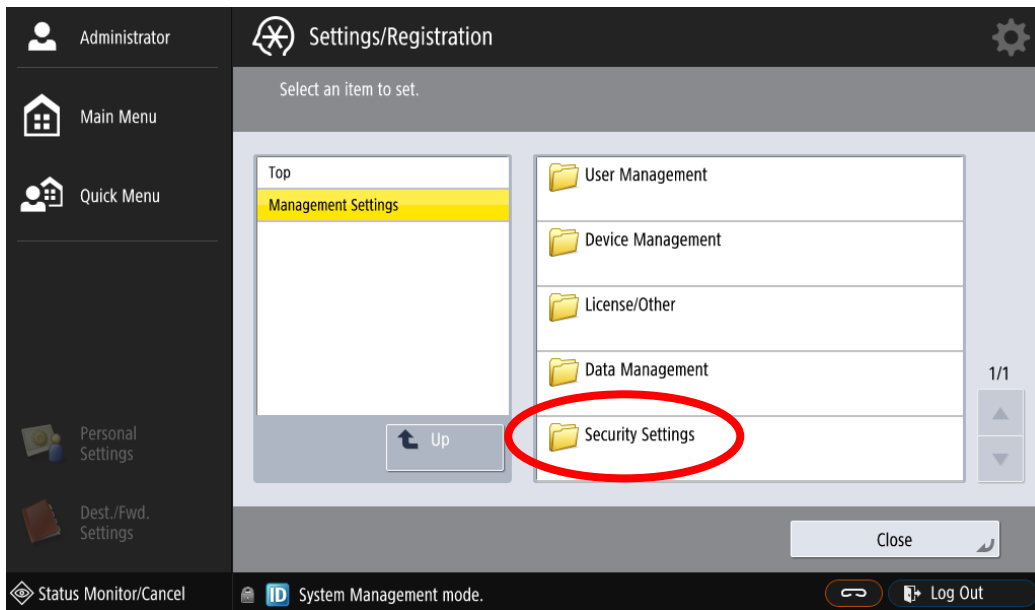
6. Kemudian Pilih **License/Other**



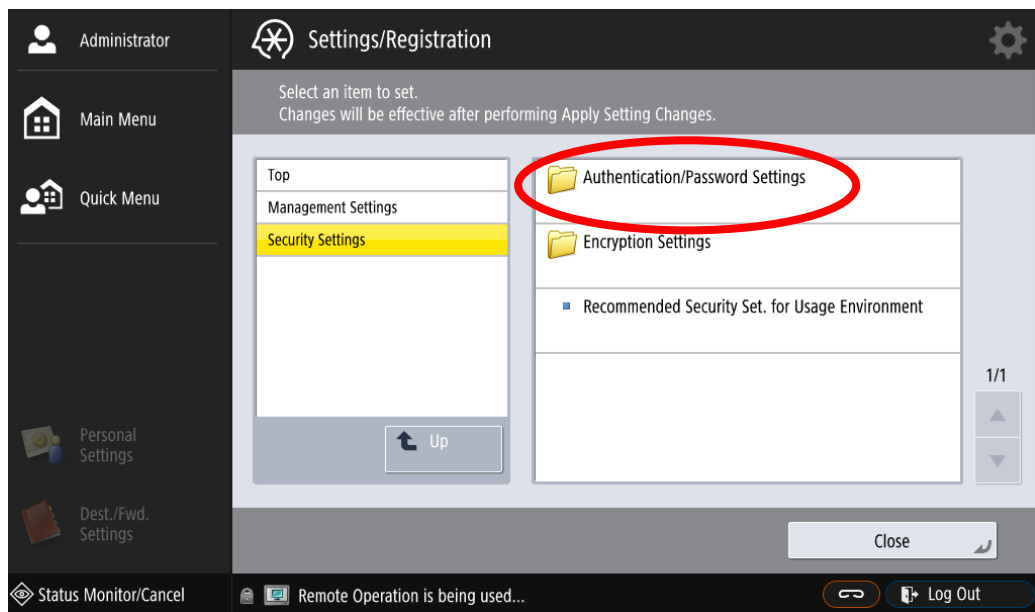
7. Nyalakan fitur **Remote UI**, **Remote Operation Settings** dan use **ACCESS MANAGEMENT SYSTEM** ke posisi **ON**. Lihat gambar



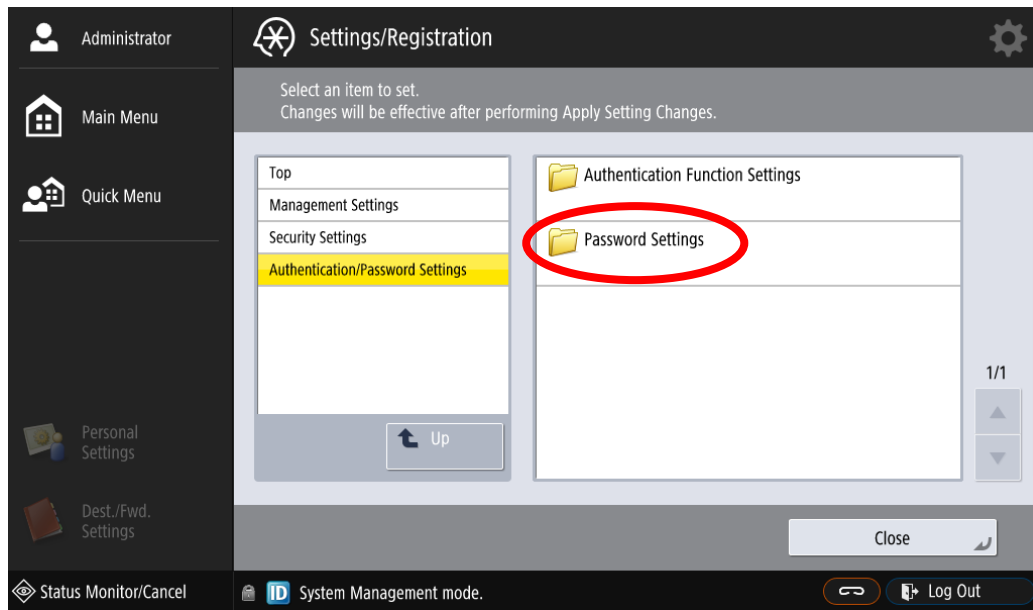
8. Kembali ke tab **Management Settings**, pilih **Security Setting**



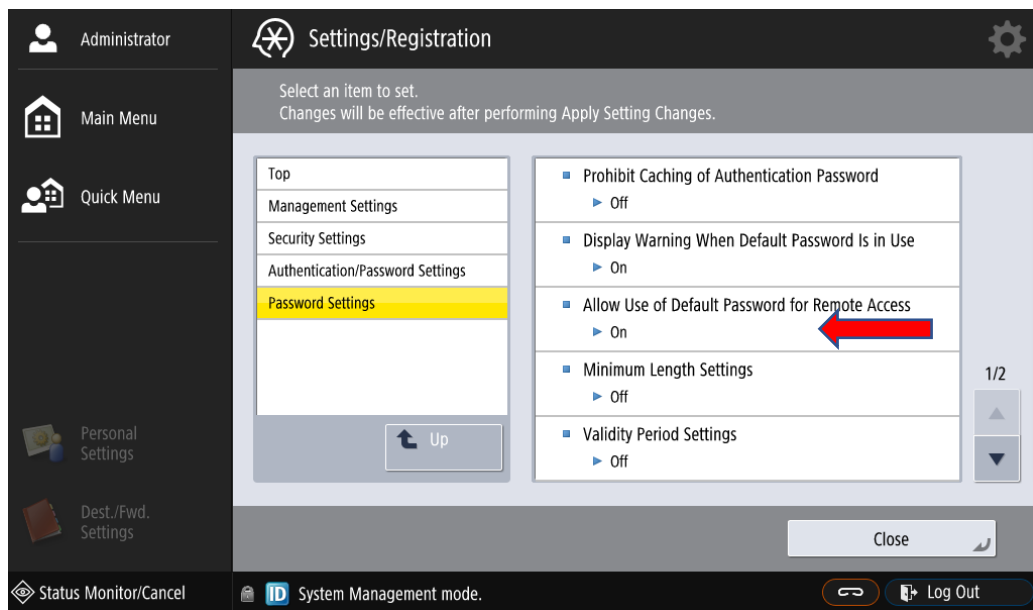
9. Pilih **Authentication/Password Settings**



10. Pilih Password Settings



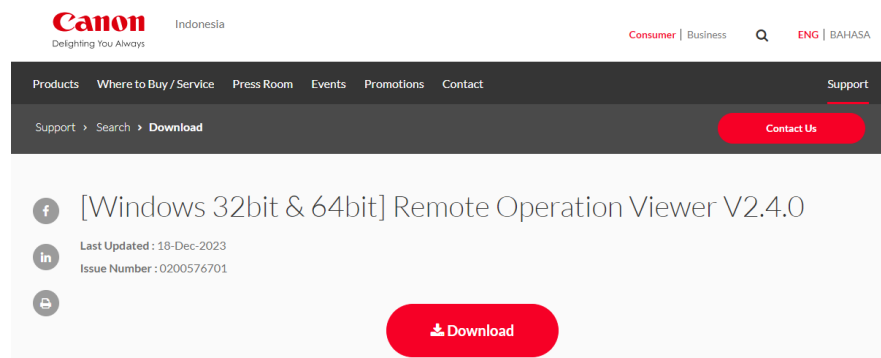
11. Nyalakan fitur Allow Use of Default Password for Remote Access ke posisi ON



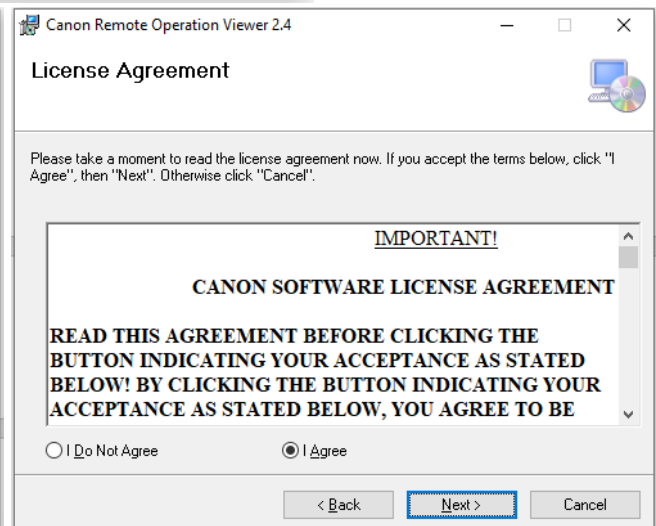
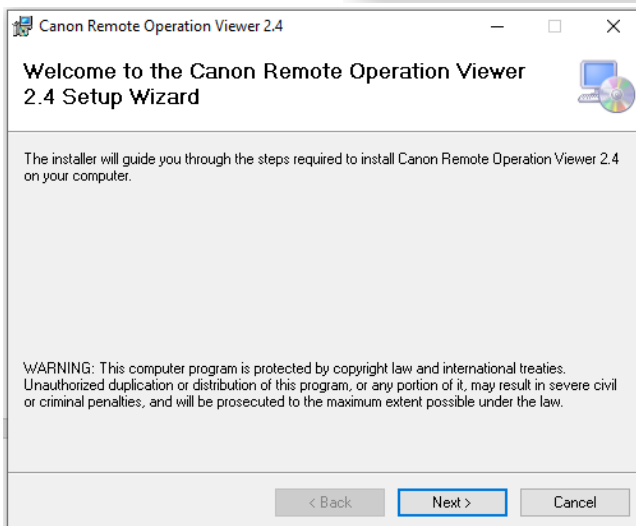
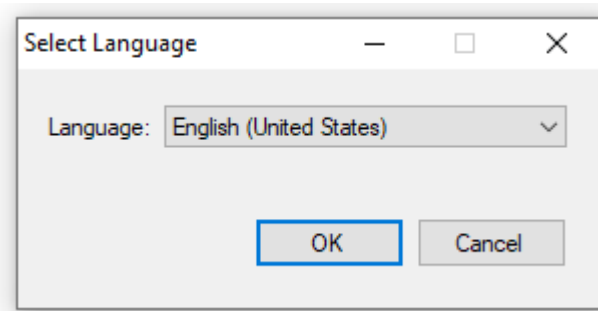
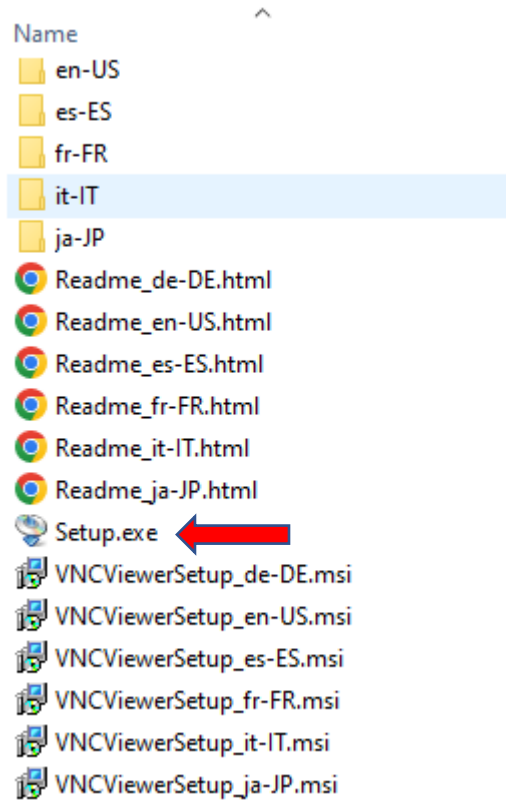
12. Jika sudah selesai, restart mesin kamu ya

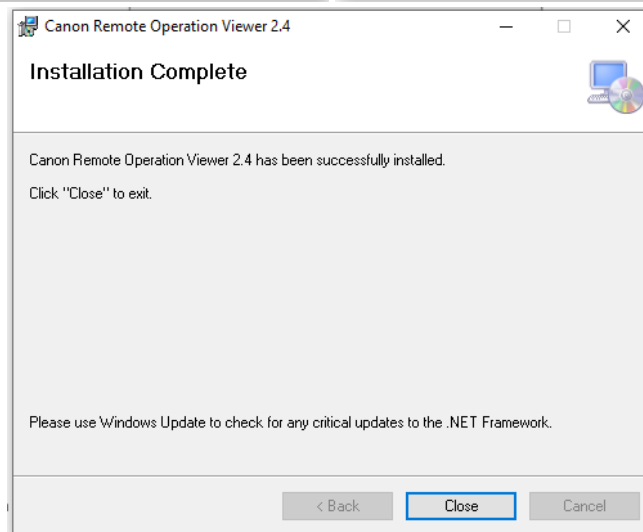
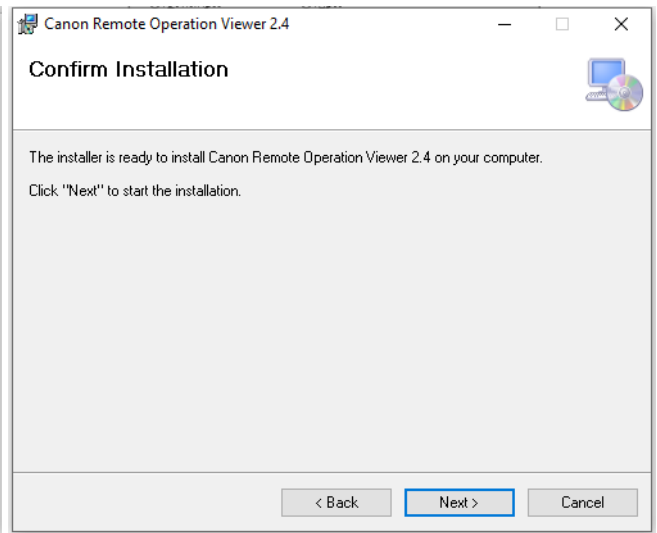
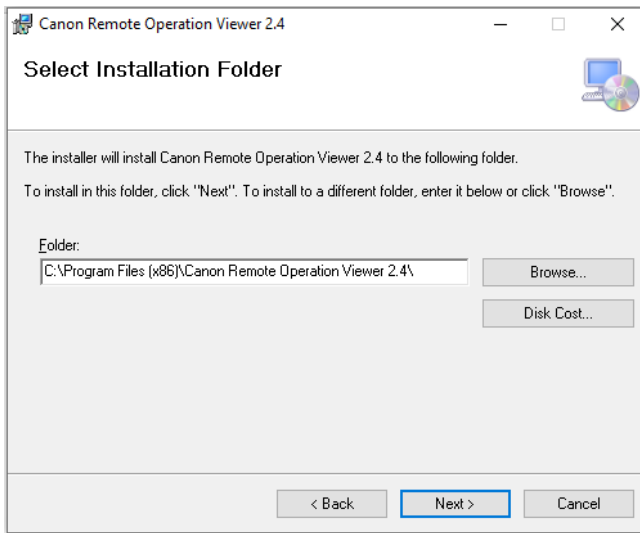
13. Langkah selanjutnya kita install aplikasi untuk remotenya ya

14. Aplikasi bisa di untuk di website canon official

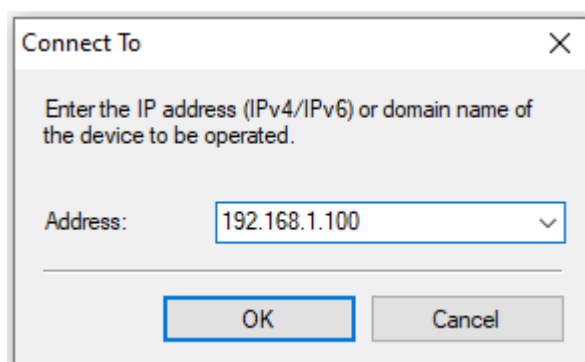
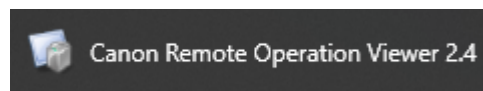


15. Jika sudah di unduh maka Langkah berikutnya adalah menginstall aplikasinya, perhatikan gambar





16. Setelah selesai melakukan instalasi, selanjutnya kita buka aplikasinya
17. Isikan IP Address mesin kamu ya



18. Dan inilah tampilan di layar kamu sobat, kamu bisa mengakses mesin kamu tanpa harus di depan mesin ya. Selamat mencoba 😊

